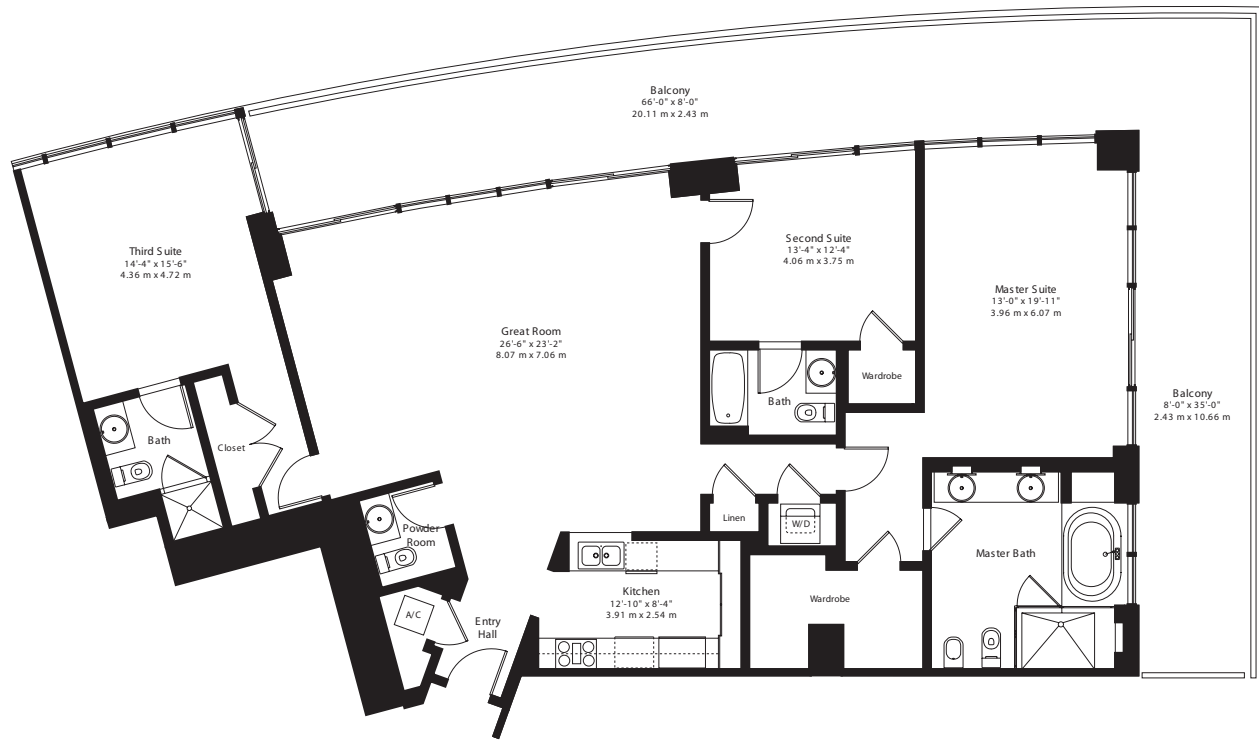
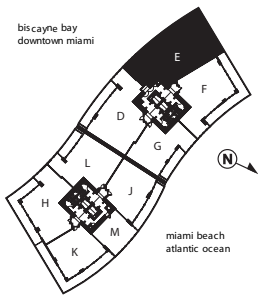


# Icon

## ICON

**residence E**  
3 bedrooms, 3.5 baths  
2,145 sq. ft. 199.20 m<sup>2</sup>  
797 sq. ft. 74.00 m<sup>2</sup> balcony  
2,942 sq. ft. 273.20 m<sup>2</sup> total



**building amenities**

- + philippe starck designed common areas
- + billiard room
- + heated lap pool
- + heated infinity-edged pool
- + café
- + conference room
- + spa
- + concierge services
- + valet parking

**residences amenities**

- + kitchens featuring marble or granite counter tops, imported european custom cabinetry, Miele® appliances and Sub-Zero® built-in refrigerator-freezer
- + master bathrooms furnished with european cabinetry, marble or granite counter tops, Philippe Starck fixtures and seamless shower enclosures
- + spacious walk-in closets
- + wiring for high-speed cable modem internet service
- + 9' high smooth ceilings